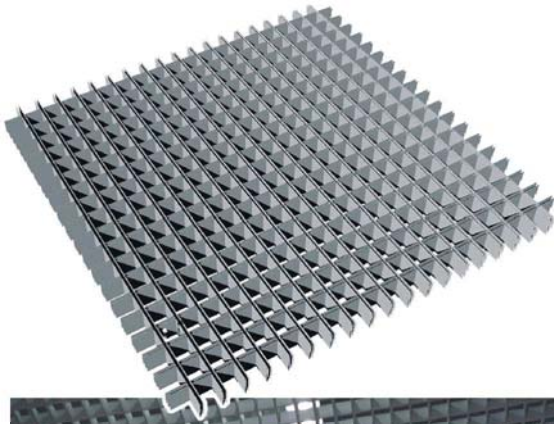
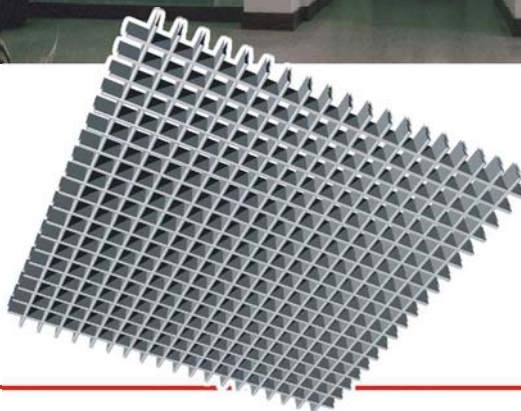
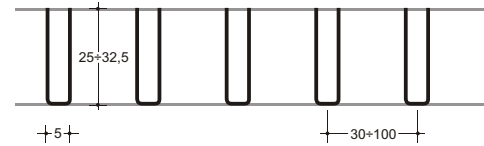
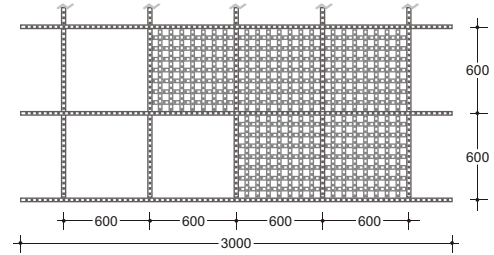


mini U-RASTER®

GALUMINIUM OPEN CELL
U-PROFILE mm 5



- Main structure integrated in the ceiling
- Reduced volume of transport
- Full range of colours
- Various cell sizes
- Highest aesthetic solution



The U-profiles, orthogonally fitted, form modular panels to be inserted in a main structure and perfectly integrated in the ceiling. Mini U-RASTER® can be supplied in a large range of standard cells and, on request, produced in various cell dimensions.