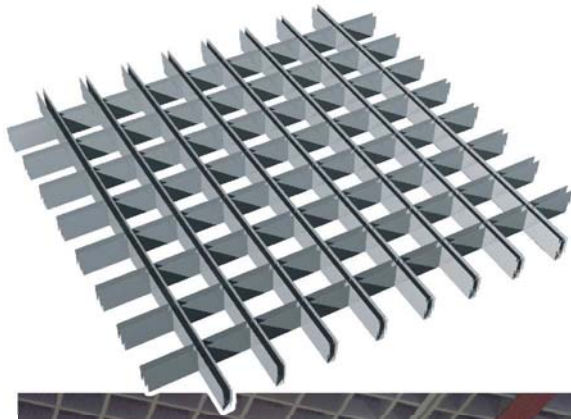
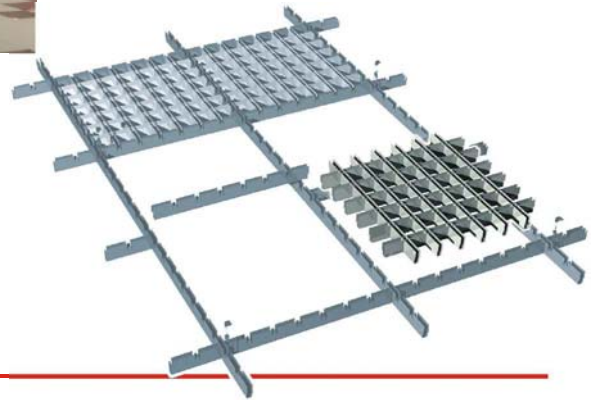
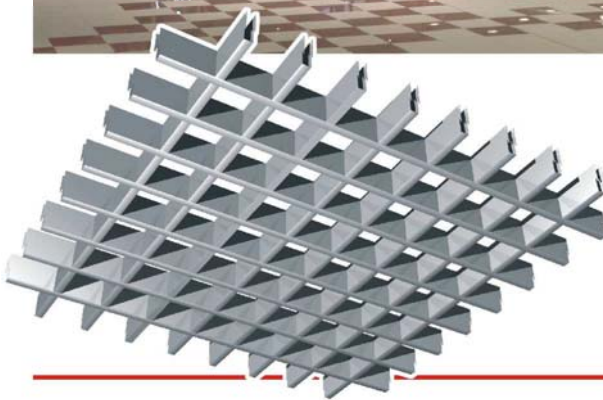
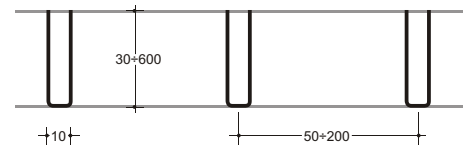
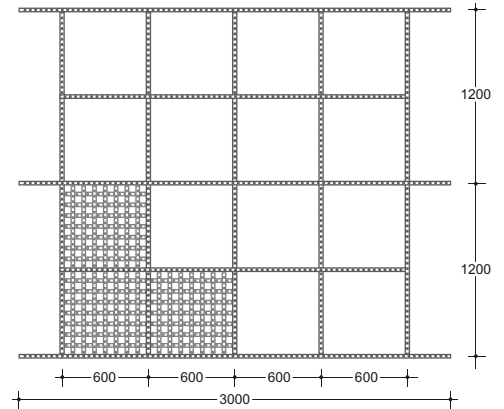


U-RASTER®
ALUMINIUM OPEN CELL
U-PROFILE mm 10



- Main structure integrated in the ceiling
- Reduced volume of transport
- Full range of colours
- Various cell sizes



The U-profiles, orthogonally fitted, form modular panel to be inserted in a main structure and perfectly integrated in the ceiling.
U-RASTER® can be supplied with a central bevelling in the lower section of the U-profile.
U-RASTER® can be supplied in a large range of standard cells end, on request, produced in various cell dimensions.